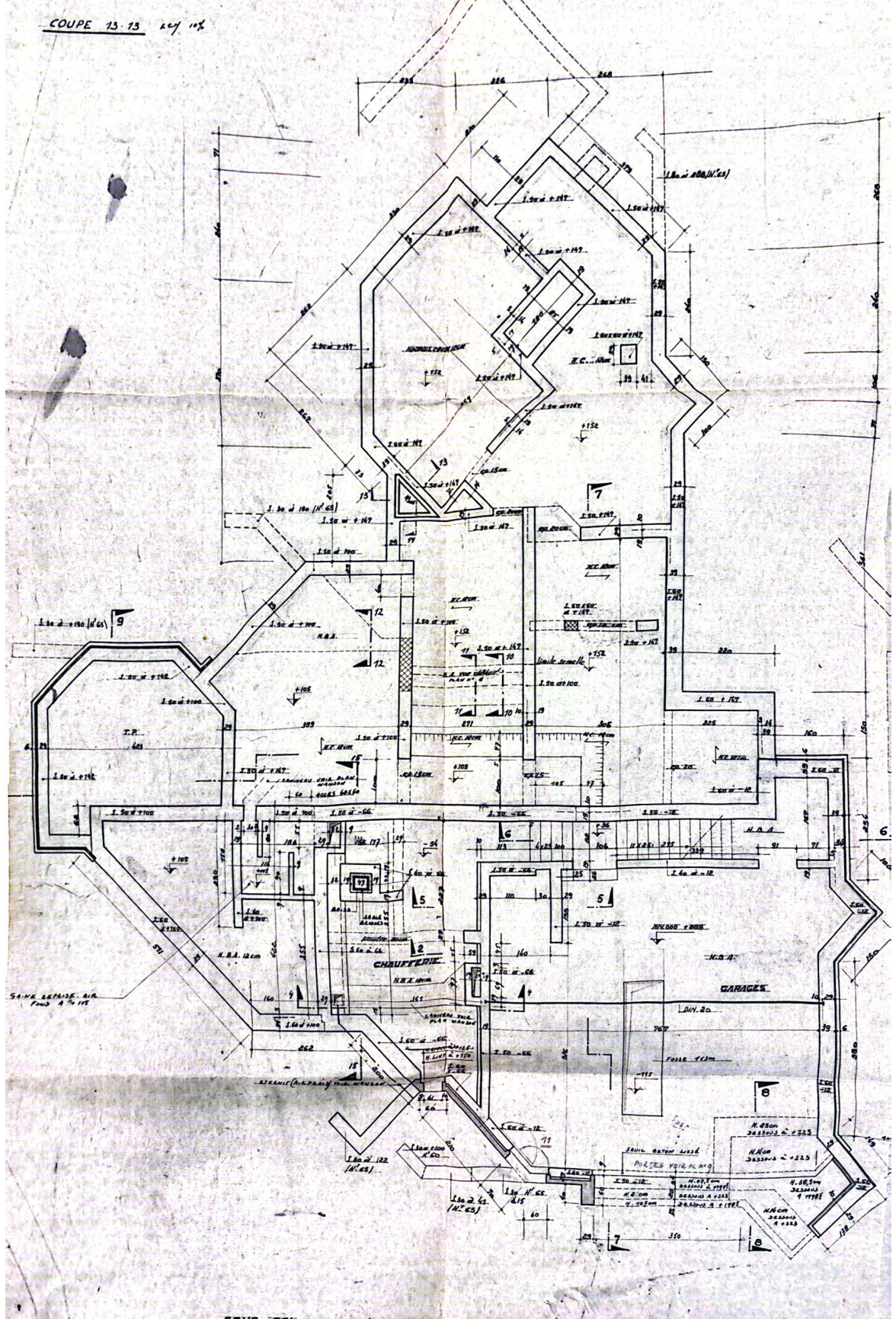
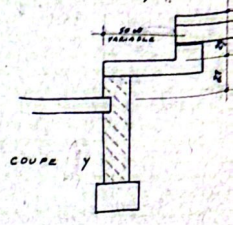
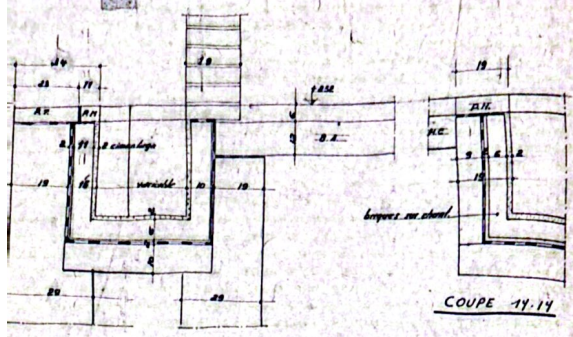


H.C. : NOUVEAU CRUVE  
 H.O.A. : NOUVEAU BÉTON ARMÉ  
 530x140 : SALLE LARGUE 300cm. NIVEAU SUPÉRIEUR  
 A +2.90 PAR RAPPORT AU NIVEAU 000  
 DU GARAGE (CÔTÉ 880 DU TERRAIN)



SOUS-SOL éch. 2cm/1m


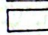



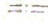

CONSTRUCTION D'UNE MAISON D'HABITATION N°12  
 "COUX ANDRÉ"  
 SUR D.B.T. n° 47°

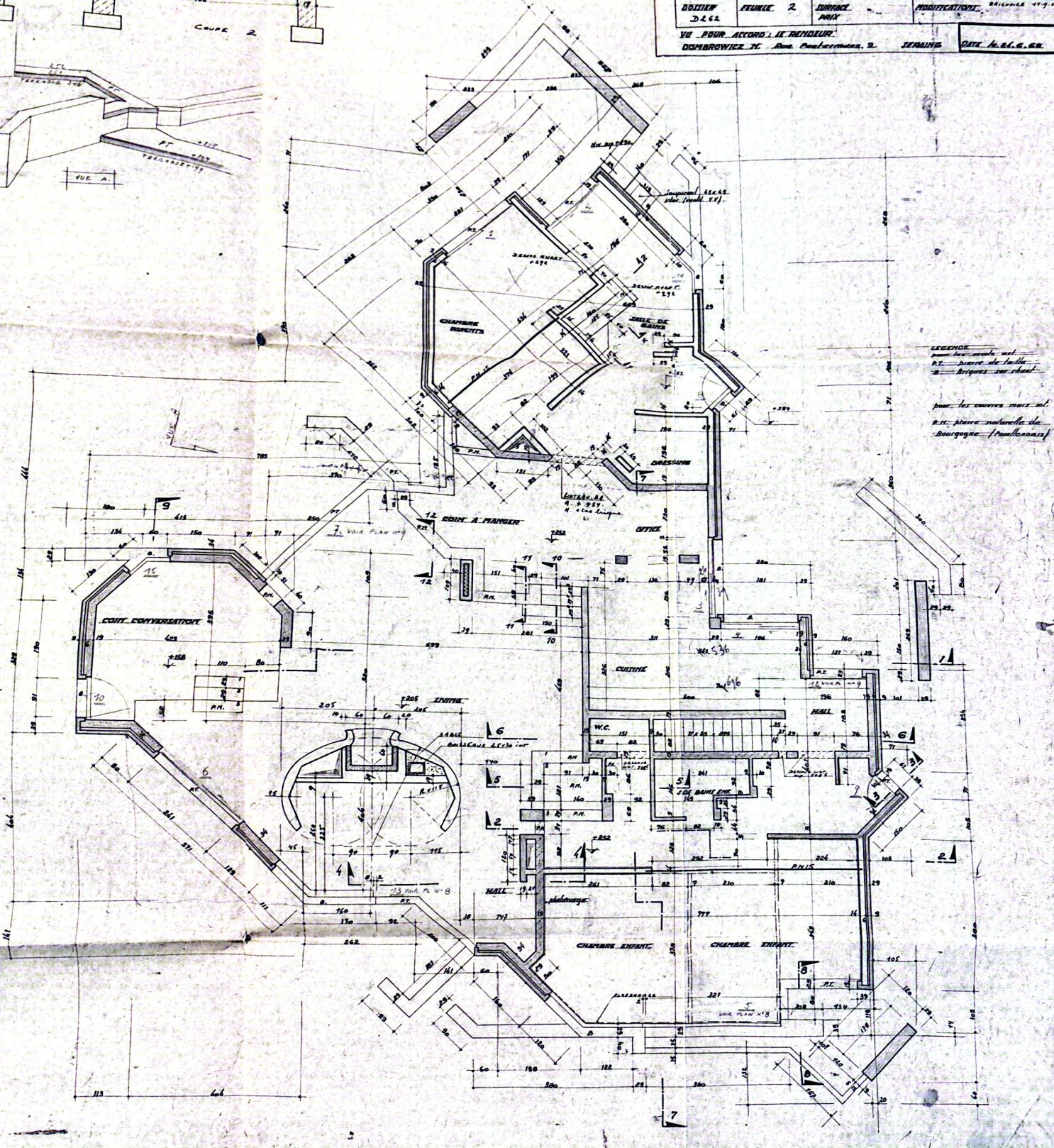
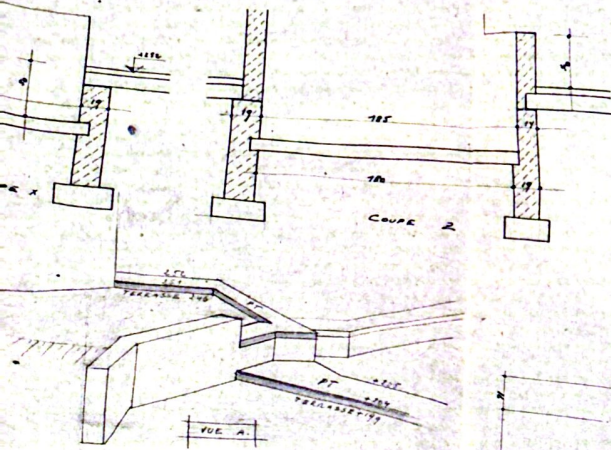
N° 12

FONDATEURS 24 1/2  
 REZ-DE-CHAUSSEE 24 1/2  
 COUPES 13 + 14 24 1/2

DESSIN PAR  
 L'ARCHITECTE  
 EUGÈNE GUY  
 10, Cour de la Mairie  
 BUREAU MEM.  
 I.R. 18 1036  
 I.G. 18 936

OBJET : TRAVAIL N° 2 SURFACE ANNEXE  
 D.D. 62 MODIFICATIONS : ANNEXE N° 19-19  
 VII FOUR ACCORD : LE RENDEUR  
 DOMBROWICZ 71, Rue Paul Bernier, 3 JERINGS DATE : 16.04.68

-  MAIQUES APPARANTES
-  DALOTS LOUÉS & LÉGERS
-  BATON ARRÊTÉ
-  MURS DESSUS LA TOITURE
-  TRACES DU NIVEAU SUP.
-  PLAFONDAGE
-  CLOISON LÉGÈRE



LEGÈRE  
 P.V. - Pierre Vacherie de  
 Bourgogne / Paul Bernier

REZ-DE-CHAUSSEE 1/50 m